



Martin

The **ONE** you rely on

www.martinsprocket.com

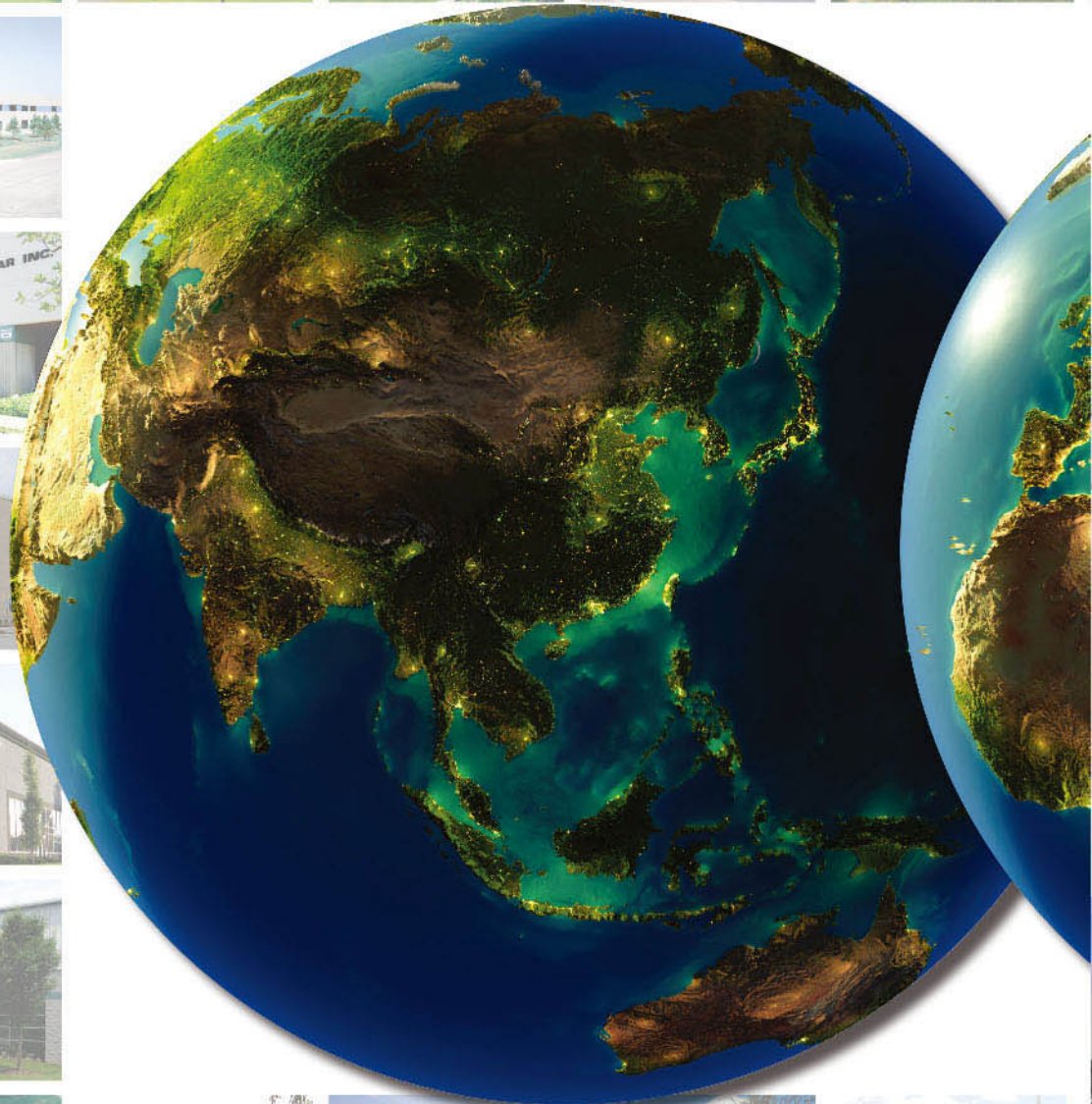
Martin

About *Martin*

Martin is a leading supplier of Power Transmission Components, Material Handling Systems and Industrial Hand Tools. A trusted authority in the marketplace, *Martin* leverages a deep knowledge of Power Transmission and Material Handling applications to provide reliable cost-saving solutions to its industrial customers.

Operating from more than 34 locations worldwide, *Martin* carries the vast inventories of a global company while consistently delivering exceptional local service and support.

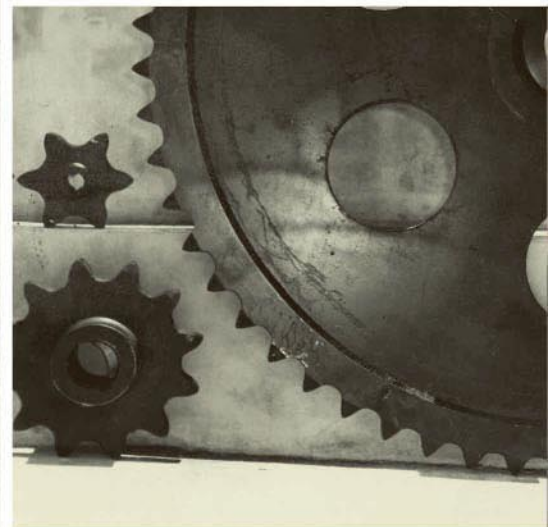
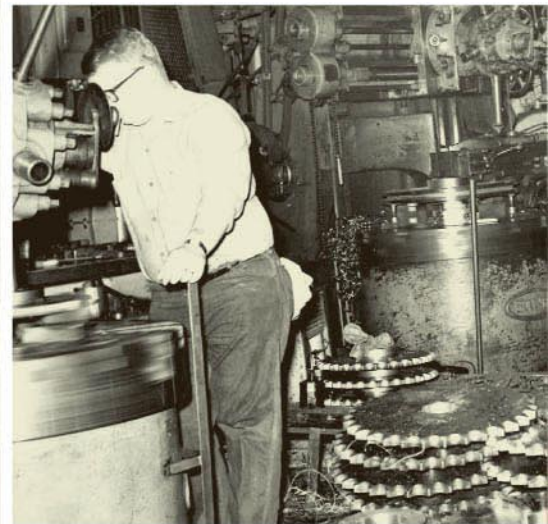
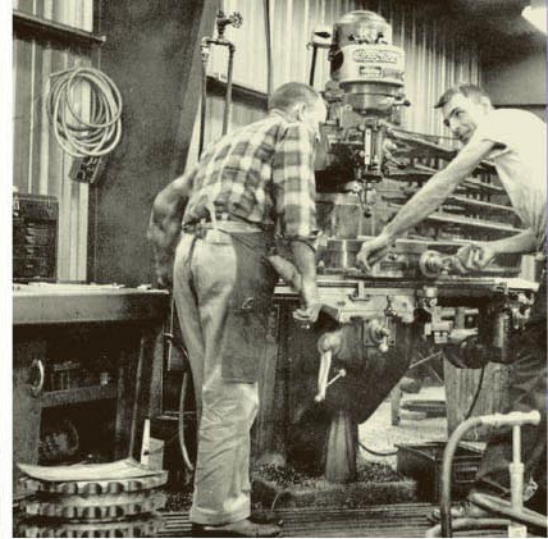
Known for meeting tight deadlines and solving unique manufacturing challenges, *Martin* keeps the industrial world moving efficiently.

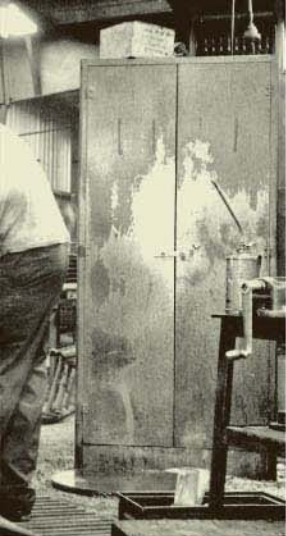




Martin

From Humble Beginnings...



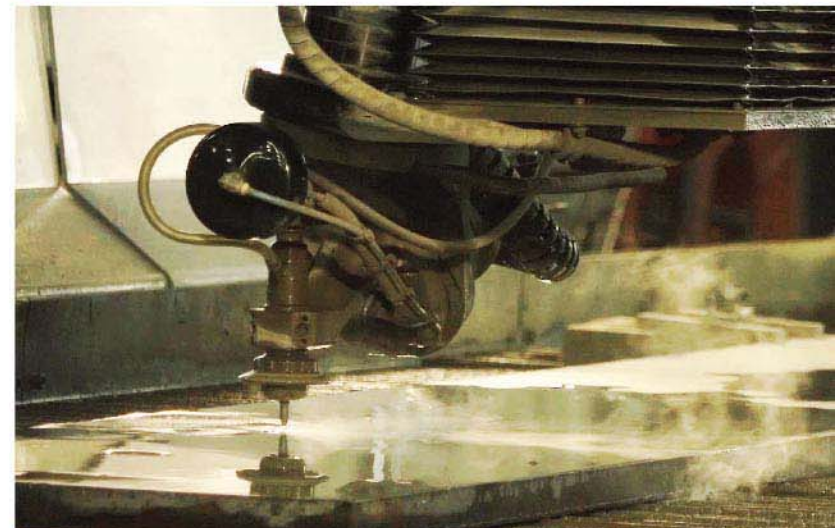
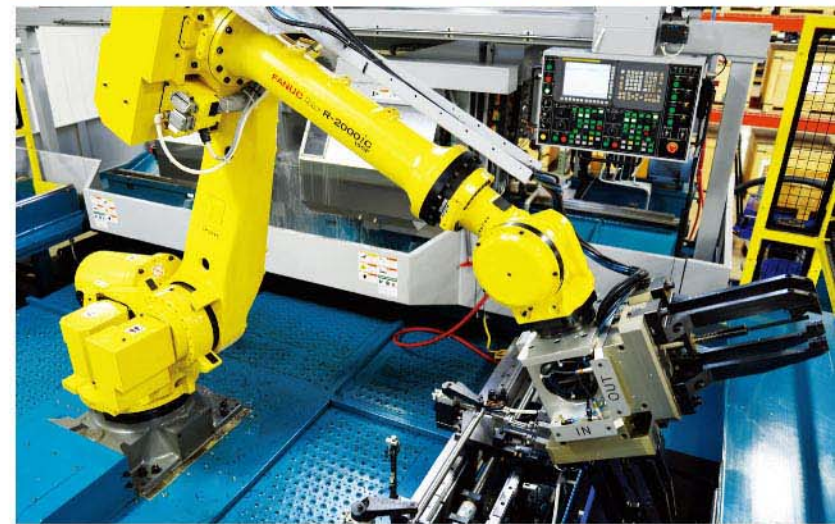


Martin was founded in 1951 based on the vision of Joe Martin Sr. with a simple philosophy, "Make quality products, have plenty of them available, and make it easy for customers to do business."

Today each *Martin* facility stocks an extensive inventory of its product lines and has the ability to manufacture or custom alter parts for emergency situations. Local service and on-site field service ensure that customers maximize uptime and efficiency.

After more than 65 years of adapting with growing industries, *Martin's* continued focus on Quality, Inventory, and Service makes *Martin* the One you rely on.

***To Unmatched Quality
Inventory & Service***



Martin





Power Transmission

Power Transmission Products When and Where You Need Them



Martin carries the largest inventory of stock Power Transmission components worldwide and offers lightning fast delivery times for altered and Made-to-Order parts to keep your equipment in motion.

SPROCKETS 

GEARS 

SHEAVES 

SYNCHRONOUS SPROCKETS 

COUPLINGS 

BUSHINGS 



Power Transmission

Power Transmission Products When and Where You Need Them



Sprockets

Martin sets the standard for Sprocket manufacturing with the most extensive offering of stock and Made-to-Order Sprockets.



Gears

From Spur Gears to Worm Gears, *Martin* provides a massive inventory of Gears and offers quick delivery on a wide range of specialty Gears.



Sheaves

Martin keeps the industry's V-belt drives running with stock and Made-to-Order Sheaves made locally in any of the 34 locations worldwide.



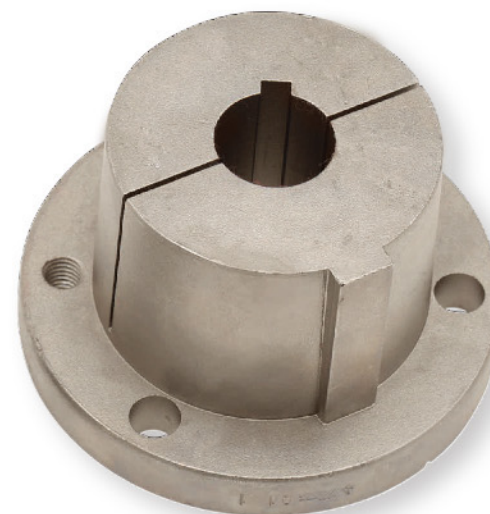
Synchronous

Martin supplies reliable Synchronous Sprockets and Timing Belt Pulleys for all major brands of high-performance belts.



Couplings

Martin carries a complete line of Shaft Couplings in a wide range of materials to ensure Shaft alignment and increase uptime.



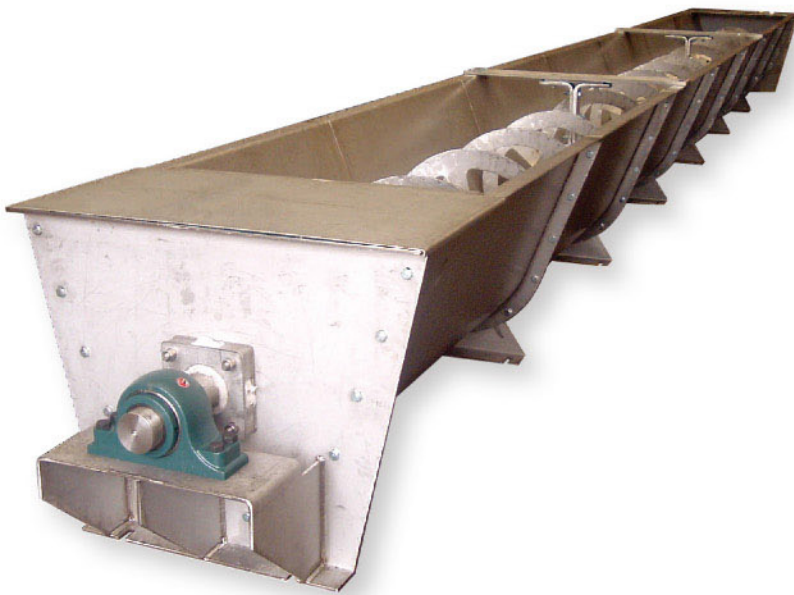
Bushings

Martin stocks all popular types and sizes of interchangeable Bushings and Weld-On Hubs to fit any industrial application.

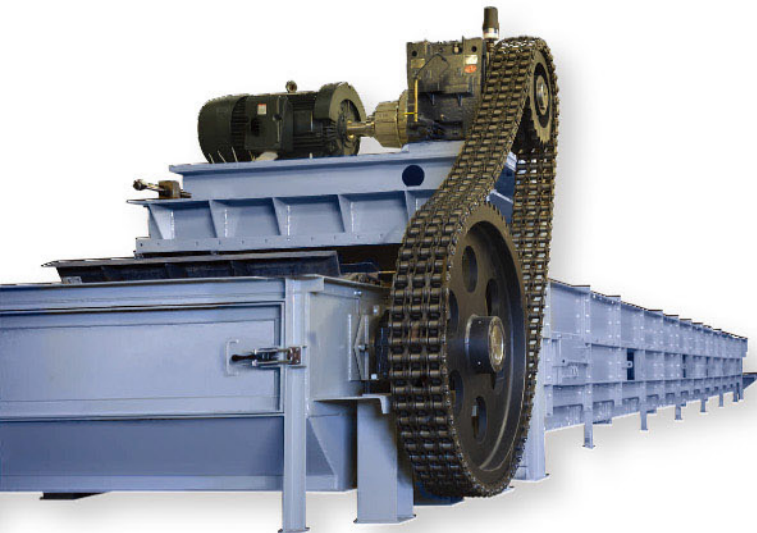


Material Handling

*Efficient Material Handling Systems
& Reliable Components*



 **Screw Conveyors**



 **Drag Conveyors**



 **Food-Grade & Specialty Conveyors**

Martin manufactures efficient, reliable Conveyors and components in strategic locations throughout the world. When it comes to Material Handling challenges, an experienced *Martin* field support technician is always just a phone call away.



 **Components**



Heavy-Duty Conveyor Pulleys

High-Performance Conveyor Pulleys for Any Application

Martin's Heavy-Duty Conveyor Pulleys are manufactured to offer maximum protection against premature failure in harsh applications. *Martin* delivers stock and Made-to-Order Conveyor Pulleys within hours and days, not weeks.

HEAVY-DUTY DRUM PULLEYS ●

HEAVY-DUTY WING PULLEYS ☼

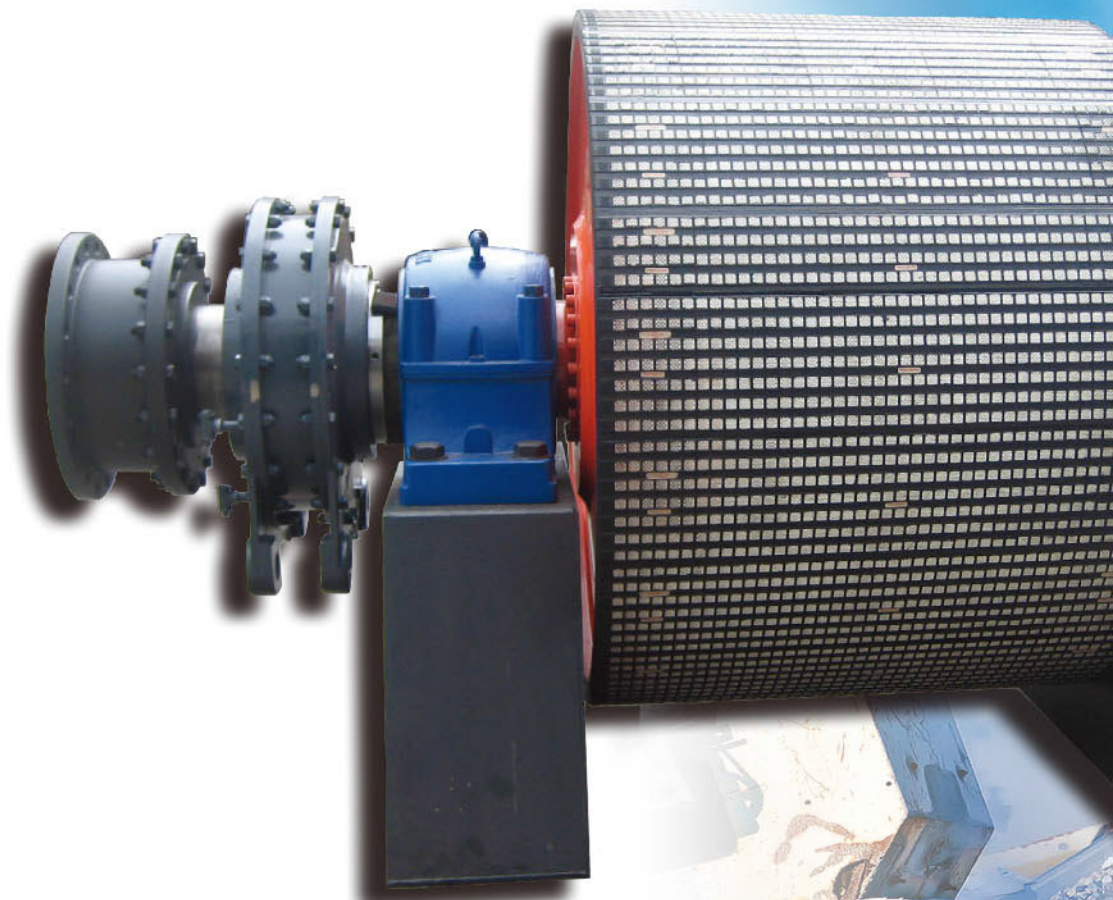
ENGINEERED CLASS PULLEYS ⇄

SPECIAL CONSTRUCTION PULLEYS ▨▨▨

BUSHINGS & HUBS ●

TAKE-UP FRAMES ⇄

SHAFTING —



Engineered Class Pulleys

The *Martin* Engineered Class Pulley (ECP) line can be used effectively in every industry to ensure optimum performance and Pulley longevity.



Heavy-Duty Drum & Wing Pulleys

Available in Standard, Quarry, and Mine Duty configurations, *Martin's* Heavy-Duty Drum and Wing Pulleys meet the demanding requirements of harsh applications.

Martin

Clean Flight® Wing

The innovative design of *Martin's* Clean Flight® Wing Pulley combines the material rejection technology of a screw conveyor with the durability of a Heavy Duty Wing Pulley. Constructed with distinctly aggressive materials & thick flights, Clean Flight® Wing Pulleys are built to withstand abrasive applications.

Martin



Martin





Idlers

*Prolong Idler Service Life and Reduce Conveyor Operating Costs with **Martin** Idlers*

Martin Idlers are manufactured to exceed CEMA standards. *Martin* uses triple labyrinth seals and sealed-for-life ball bearings that allow for trouble-free Idler life in the harshest of applications. *Martin* can provide complete, cost-saving solutions for your Belt Conveyor needs.



IMPACT IDLERS 

TROUGHING IDLERS 

SELF-ALIGNING IDLERS 

RETURN IDLERS 

FLAT CARRIERS 

SPECIALS 

Martin

BODY & FENDER HAMMERS [T](#)

BODY & FENDER PICKS [T](#)

BODY & FENDER SPOONS [I](#)

BODY & FENDER DOLLIES [B](#)

HAMMERS [I](#)

WRENCHES [I](#)

SOCKETS [B](#)

SCREW DRIVERS [I](#)

PUNCHES & CHISELS [I](#)

OTHER TOOLS [Q](#)



[T](#)[T](#)[I](#)[B](#) Body & Fender Tools

Drawing from decades of experience serving the automobile repair industry, *Martin* is proud to supply American-Made Body Hammers, Dolly Blocks, Body Picks, Tool Sets, Files and more. *Martin* delivers quality tools that stand up to the toughest of body and fender repair tasks.



Industrial Hand Tools

Continuing a Tradition of Quality Tools You Can Rely On



Industrial Hand Tools

Continuing a tradition of American tool manufacturing, *Martin* is proud to produce high-quality, durable Industrial Hand Tools, Sockets, Wrenches, Hammers, Pliers, Screwdrivers, Punches, Chisels, and Master Sets that withstand frequent use.



The Martin logo is written in a white, elegant script font on a dark blue rectangular background.

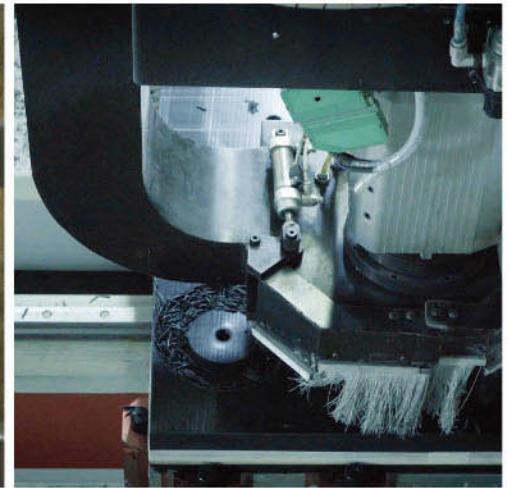
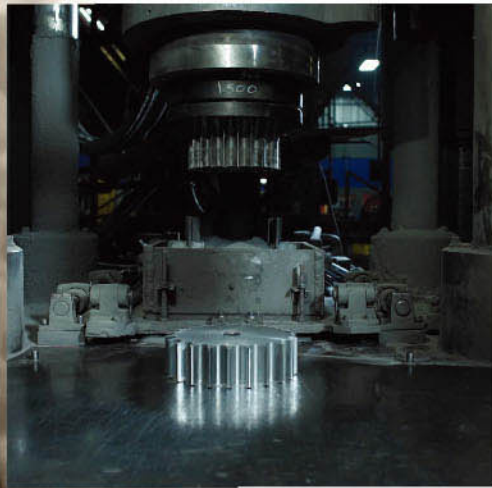
Martin

Custom
Capabilities

A vertical list of manufacturing capabilities, each preceded by a horizontal line.

SINTERED METAL
INJECTION MOLDING
PLASTIC MILLING
FORGINGS
CASTINGS
WATER JET
LASER CUTTING

Martin offers a wide range of manufacturing processes to meet any custom need. *Martin* can fabricate, cast, forge, sinter and injection mold to almost any custom specification as well as any secondary operations. This helps eliminate the need for multiple vendors and reduces production time, which leads to substantial cost savings for your organization.



Global Strength, Local Service

During our years serving the Power Transmission & Material Handling industries, *Martin* has built a reputation on quality service. Our experienced industry professionals have a deep understanding of the regional and market nuances of the territory they serve.

We believe it should be easy to reach a knowledgeable, dedicated person who is ready to help. Whether it's training at our place, a meeting in your office, or an on-site analysis at a plant - the *Martin* team is ready to help you increase uptime and cost savings.



Martin





Market Expertise

Martin's extensive product line addresses the ever-changing needs of a wide variety of industries throughout the world. *Martin* employs leading experts in each industry and continually innovates to deliver value-added solutions that minimize downtime, reduce maintenance costs, and solve countless other daily operations challenges.

AGRICULTURE

ALTERNATIVE ENERGY

BEVERAGE BOTTLING

CHEMICAL PROCESSING

COMMERCIAL CONSTRUCTION

ENVIRONMENTAL

FOOD PROCESSING

FOREST & WOOD PRODUCTS

HIGHWAY & TRANSPORTATION

HVAC

MINING

OIL & GAS

PACKAGING

PHARMACEUTICAL

PULP & PAPER

RENDERING

WASTEWATER

AND MANY MORE



Locations

Since its founding in Arlington, Texas in 1951, *Martin* has grown to more than 34 locations worldwide. These manufacturing and sales branches are strategically located to service the industries need with fast response and reliable quality anywhere in the world.

Working with your local *Martin* branch connects you with a vast network of experienced sales, engineering, manufacturing and service focused industrial experts.

These branches carry extensive inventories of Power Transmission and Material Handling parts for quick alterations. Made-to-Order parts and components are produced regionally for quick delivery in emergency situations.

Our organization may be global, but we're still proud of our local approach to service and quality. From the first phone call to final inspection, your order is treated with a sense of urgency and is hand inspected during each manufacturing process.



When downtime isn't an option, Martin is the ONE to rely on.



CHINA

Shanghai • Changzhou • Fuzhou • Tianjin
Tel: +86 21 67084888
Fax: +86 21 67084889
IntlSales@martinsprocket.com
DG_BR82_Sales@martinchina.com

USA

Corporate Offices Sales & Manufacturing:
Arlington, TX

Regional Manufacturing Plants:

Albemarle, NC • Atlanta, GA • Burleson, TX • Danielsville, PA • Ft. Worth, TX • Montpelier, OH • Sacramento, CA

Manufacturing Only:

Abilene, TX • Clarksville, TX • Dallas, TX • Mansfield, TX • Paragould, AR

Branch Manufacturing Plants:

Boston, MA • Charlotte, NC • Chicago, IL • Denver, CO • Houston, TX • Kansas City, MO • Los Angeles, CA • Minneapolis, MN • Nashville, TN • Pittsburgh, PA • Portland, OR • Tampa, FL

CANADA

Cambridge, Ontario
Edmonton, Alberta
Mississauga, Ontario

MEXICO

Guadalajara, JAL
Monterrey, N.L.
Toluca, MEX

BRAZIL

São Paulo, SP

UNITED KINGDOM

North Hampton

Distributor authorized by *Martin*

www.martinsprocket.com