



SAMEC
COSTRUZIONI MECCANICHE

S.A.M.E.C. S.p.A. - Costruzioni Meccaniche
Via IV Novembre, 1 - 26022 - Castelveverde (CR) - ITALIA
R.L. di CREMONA - C.F. / P.IVA: 00110410198
R.E.A. 63782 - CAP. SOC. € 155.000,00 i.v.
Tel. +39 0372 42 71 22 - Fax. +39 0372 42 81 34
info@samecspa.com - www.samecspa.com



HANDLING COMPANY PROFILE

GENERAL INFORMATION

BUSINESS NAME	OFFICINE MECCANICHE SAMEC
LEGAL NAME	S.p.A.
MEMBER OF THE TRADE, INDUSTRY, AGRIC. AND MEMBERSHIP CRAFT OF CREMONA	N° 63782
REGISTERED PLACE OF BUSINESS	Via IV NOVEMBRE , 1 26022 CREMONA
MANAGEMENT - OFFICES - WORKSHOP	AS ABOVE
WEB SITE	www.samecspa.com
TELEPHONE NUMBER	0039 372 / 427122
TELEFAX NUMBER	0039 372 / 428134
E-MAIL	info@samecspa.com
ESTABLISHMENT DATE	1954
NOMINAL CAPITAL	€155.000





COMPANY BACKGROUND AND TECHNICAL INFORMATIONS

MAIN PRODUCTS AND FIELDS IN THEY ARE USED

FIELDS :

CHEMICAL

FINE CHEMICAL

PETROCHEMICAL

METALLURGIC

FOODS

PHARMACEUTICAL

COGENERATION POWER PLANTS FOR ELECTRIC AND THERMAL PRODUCTION

WOOD PANEL

PRODUCTS DEPARTMENT 1 :

REACTORS

COLUMNS

SEPARATORS

PRESSURE VESSELS

ATMOSPHERIC VESSELS

HIGH CAPACITY STORAGE TANK

STEAM DRUM

FILTERS

SHELL & TUBE HEAT EXCHANGERS

HIGH AND LOW VISCOSITY AGITATORS

MIXER FOR POWDERS

PRODUCTS DEPARTMENT 2 :

SCREW CONVEYORS

VERTICAL SCREW CONVEYORS

BELT CONVEYORS

CHAIN CONVEYORS

DOUBLE CHAIN CONVEYORS

BUCKET CONVEYORS

MULTI-SCREW CONVEYORS

PLATE CONVEYORS

STAND SEPARATORS MACHINE

BUCKET ELEVATORS

TRASLATING SCREW

STEEL STRUCTURES

SPECIAL CONVEYORS





SAMEC
COSTRUZIONI MECCANICHE

S.A.M.E.C. S.p.A. - Costruzioni Meccaniche
 Via IV Novembre, 1 - 26022 - Castelverde (CR) - ITALIA
 R.L. di CREMONA - C.F. / P.IVA: 00110410198
 R.E.A. 63782 - CAP. SOC. € 155.000,00 i.v.
 Tel. +39 0372 42 71 22 - Fax. +39 0372 42 81 34
 info@samecspa.com - www.samecspa.com



**MANUFACTURING CODE AND STANDARDS,
 INSPECTION AUTHORITIES**

CODES & STANDARDS

ASME STAMP "U"
 BS 5500
 AD MERKBLATTER
 CODAP
 STOOMWEZEN
 API
 ANSI
 UOP
 MEU & TM

INSPECTION AUTHORITIES

LLOYD'S REGISTER
 BUREAU VERITAS
 APAVE
 ISPESL
 BE Inspection Ltd
 FERROVIE DELLO STATO
 RINA
 UDT Poland

QUALIFICATIONS

UNI EN ISO 9001
 CERTIFICATE N° : 160280
 CERTIFIED BY : LLOYD'S REGISTER

ASME STAMP "U"
 CERTIFICATE N° : 30067
 CERTIFIED BY : LLOYD'S REGISTER





RAW MATERIAL USED

CARBON STEEL

HARDNESS STEEL LIKE HARDOX - XAR400/450

HIGHT TEMPERATURE STAINLESS STEEL AISI310

LOW AND HIGH ALLOY STEEL

STAINLESS STEEL

COPPER AND ITS ALLOY SUCH US ALUMINIUM BRONZE , MONEL

NICHEL AND ITS ALLOYS , SUCH AS INCONEL 625 , HASTELLOY C276 , C 22 , B3

DIN 1.4462 - SAF 2205

DIN 1.4563 SANICRO 28

TECHNICAL SERVICES

SAMEC HAS QUALIFIED ENGINEERS EMPLOYED IN TECHNICAL SERVICES FOR THE DESIGN AND FABRICATIONS PURPOSE TO GUARANTEE AN HIGH QUALITY PRODUCT TO A COMPETITIVE PRICE. THE ENGINEERING DEPARTMENT COORDINATES EACH ACTIVITY PERTINENT TO THE DESIGN TO THE PROCESSING OF THE DRAWINGS, TO THE MECHANICAL, SEISMIC, WIND, LIFTING AND TRASPORT CALCULATION. THE RESPONSABILITIES AND DUTIES OF THIS SERVICE AND OF ALL THE OTHER ONES ARE DETAILED THE SERVICE PLANS AND MANAGES THE OPERATING ACTIVITIES TO OBTAIN THE CONFORMITY OF MANUFACTURING SEQUENCE WITH THE TECHNICAL REQUIREMENTS, STANDARDS AND SPECIFICATIONS. THE SERVICE ESTABLISHES THE FABRICATION SCHEDULES AND MANAGES THE COMPANY RESORTS TO MEET ALL THE TECHNICAL REQUIREMENTS AND DELIVERY TERMS. THE PREVENT CONTROL STAGES, THROUGH MANUFACTURE AND AS FINAL, ARE FIXED IN THE INSPECTION PLANS ISSUED BY THE QUALITY CONTROL SERVICE. THE INSPECTION TECHNOLOGICAL TEST AND THOSE ONES FOR THE FABRICATION AND MATERIAL CONTROL, ARE PROPERLY DETAILED IN THE PROCEDURES ISSUED FOR EACH JOB BY THE QCS.

THE GENERAL MANAGER IS ENTRUSTED TO VERIFY THE QUALITY ASSURANCE SYSTEM WHICH HAS TO GUIDE AND COORDINATE ALL THE ATER SERVICES. THE METHOD APPLIED IS DETAILED IN THE QUALITY ASSURANCE MANUAL.





WORKSHOP INFORMATION

TOTAL AREA	Mq 30.000
COVERED AREA	Mq 11.000
BAYS	N° 4
MAXIMUM LIFTING CAPACITY	TON 50
MAXIMUM SHIPPING CAPACITY	LENGTH 50 m
	WIDTH 5 m
	HEIGHT 6 m
ANNUAL CAPABILITY	92.000 MANHOUR
ANNUAL SUPPLY CAPACITY	4.000 TON
OPTIMUM SUPPLY QUANTITY VALUE	€ 2.000.000





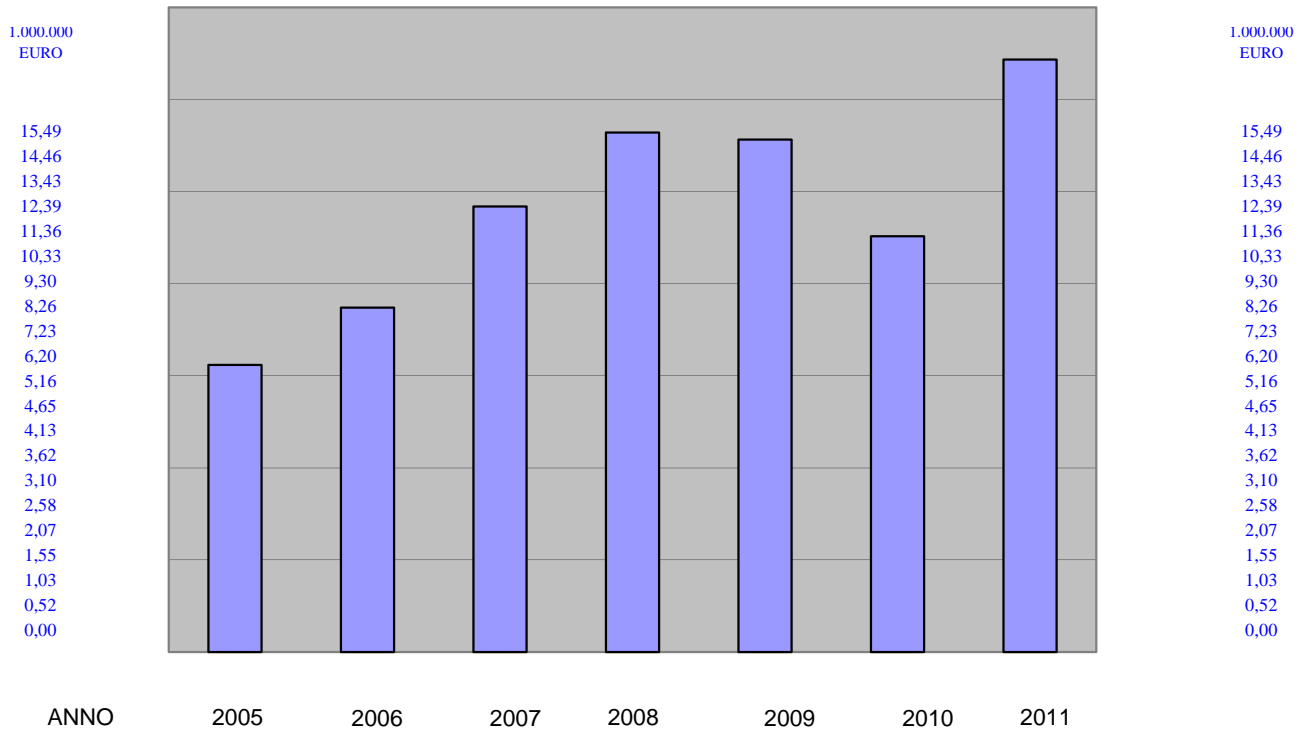
MAIN EQUIPMENTS AND FACILITIES

- 1) OXICUTTING TABLES (12 m LONG) EQUIPPED WITH CAD CAM . MAXIMUM THK 40 mm
- 2) OXICUTTING TABLES (12 m LONG) PANTOGRAFHS AND PLASMA CUTTING MAXIMUM THK 150 mm
- 3) ROLLING MACHINE FOR 3000 X 50 THK PLATES IN COLD CONDITIONS
- 4) ROLLING MACHINE FOR 2500 X 16 THK PLATES IN COLD CONDITIONS
- 5) ROLLING MACHINE FOR 2000 X 8 THK PLATES IN COLD CONDITIONS
- 6) WELDING MACHINE FOR SMAW , GTAW , GMAW , FCAW , SAW ALSO EQUIPPED WITH TANDEM AND STRIP OVERLAY DEVICES (n°2 saw for mad Diam. 5000) .
- 7) N°14 ROTATING POSITIONER FROM 20 TO 160 TON
- 8) N° 3 REVOLVING TABLE FROM 2 TO 40 TON
- 9) SKILLED MANUAL WELDERS AND WELDING MACHINE OPERATORS ARE QUALIFIED ACCORDING TO ASME IX AND ITELIAN CODE .
- 10) SAND BLASTING AND PAINTING AREA OF 800 Mq
- 11) THE WELDING MACHINE, TIME TEMPERATURE RECORDS, TERMOCOUPLES, PRESSURE GAUGES, EQUIPMENTS FOR MAGNETIC PARTICLE , ULTRASONIC AND PENETRANT TEST ARE CALIBRATED IN ACCORDANCE WITH OUR APPROVED PROCEDURES .
- 12) TEMPERATURE-HUMIDITY CONTROLLED WAREHOUSE
- 13) POWER SHEAR Length 5000 ,THK 15
- 14) PRESS BENDING MACHINE Length 6000, 200 Ton
- 15) PRESS BENDING MACHINE Length 4000, 150 Ton
- 16) JOINT DESIGN PLATE MACHINE
- 17) N°3 HORIZONTAL LATHE
- 18) N°1 AUTOMATIC LATHE
- 19) N°1 BORING MACHINE
- 20) N°1 SLOTTING MACHINE
- 21) N° 3 DRILLING MACHINE
- 22) N°2 SAWING MACHINE

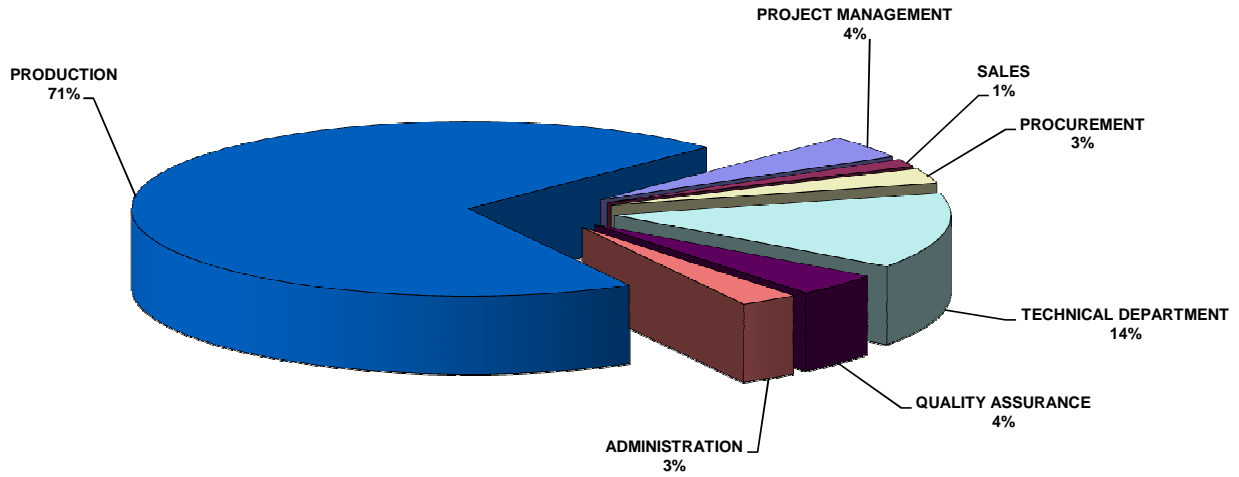




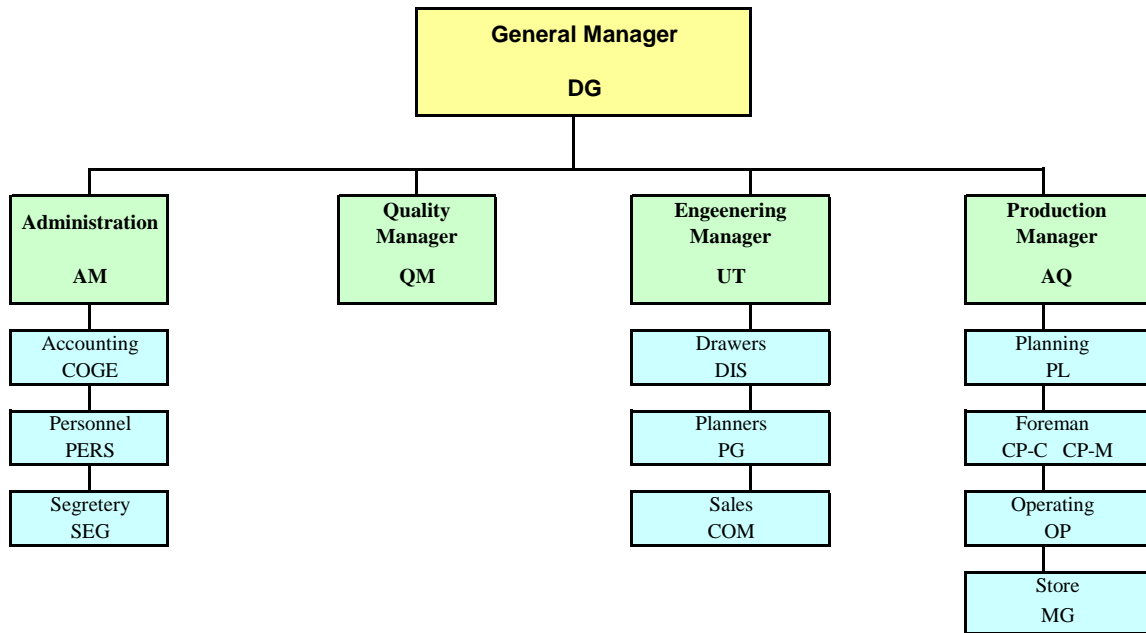
TURNOVER IN MILLIONS EURO



EMPLOYERS IN 2011



ORGANIZATION CHART





REFERENCE LIST

CUSTOMER	PLANT	SITE	YEAR	N°	TYPE	DIM. DATA	WEIGHT Kg	CONVEYORS Capacity M³/h	VESSEL Capacity	MATERIAL	JOB N°	NOTE
ABB DANECO Engineering	Steel Works Smoke Treatment	Udine Italy	1996	3	Chain conveyors for Iron Oxide	9" L=23000	1930	1		Fe 360	67	Horizontal
				1		9" L=11000	1250	2,2		Fe 360	67	Horizontal
				1	Redler per carico Silo	13" L=30000	4800	2,3		Fe 360	67	Vertical
				1	Reversible screw conveyor for Iron Oxide	Ø300	850	3		Fe 360	67	Horizontal
ABB DANECO Engineering	Steel Works Smoke Treatment	Malaysia	1997	2	Chain conveyors for Iron Oxide	9" L=21500	1950	3,6		Fe 360	62	Horizontal
				2		9" L=27000	2280	3,6		Fe 360	62	Horizontal
				1		13" L=29000	4700	7,8		Fe 360	62	Vertical
				1		9" L=20000	1950	2		Fe 360	62	Horizontal
				1		13" L=32000	5000	7,8		Fe 360	62	Horizontal
				10	Dosing Rotary Valve	Ø300	150	9		Fe 360	62	
				1	Bottom vibro machine	Ø2000	450			Fe 360	62	
				1	Reversible screw conveyor for Iron	Ø300	750	9		Fe 360	62	Horizontal
ABB DANECO Engineering	Steel Works Smoke Treatment	Mexico De Acero	1998	2	Chain conveyors for Iron Oxide	13" L=32000	4500	7,8		Fe 360	64	Vertical
				2		9" L=22600	2200	3,6		Fe 360	64	Horizontal
				1	Reversible screw conv.	Ø300	700	10		Fe 360	64	Horizontal
ACCIAIERIA DEL TANARO End Users	Steel Works Smoke Treatment	Lesegno Italy	1998	1	Chain conveyors for Iron Oxide	15" L=25000	4500	12		Fe 360	12	Vertical
ILVA TARANTO End Users	Steel Works Smoke Treatment	Taranto Italy	1998	1	Chain conveyors for powder carbon coke	15" L=25000	4500	15		Fe 360	15	Horizontal
ACCIAIERIA DI BOLZANO End Users	Steel Works Smoke Treatment	Bolzano Italy	1997	1	Chain conveyors for Iron Oxide	9" L=15000	1650	1		Fe 360		Horizontal
				1		9" L=11000	1250	2,2		Fe 360		Horizontal
				1		13" L=30000	5000	7,8		Fe 360		Vertical
				2		Ø300	850	9		Fe 360		Horizontal
HES End Users	Steel Works Smoke Treatment	Germany	1998	1	Chain conveyors for Iron Oxide	9" L=15000	1650	1		Fe 360		Horizontal
				1		9" L=11000	1250	2,2		Fe 360		Horizontal
				2		13" L=30000	5000	7,8		Fe 360		Vertical
				1		Ø300	850	9		Fe 360		Horizontal
BES End Users	Steel Works Smoke Treatment	Germany	1999	1	Chain conveyors for Iron Oxide	15" L=25000	4500	12		Fe 360		Vertical
LOMELLINA ENERGIA Foster Wheeler Engineering	Chemical, Petrochemical, Pharmaceutical, Biotechnology	Parona Italy	1999	1	Belt conveyor	1000 x 15000		300		Fe	112	Tested by Customer



CUSTOMER	PLANT	SITE	YEAR	N°	TYPE	DIM. DATA	WEIGHT Kg	CONVEYORS Capacity M³/h	VESSEL Capacity	MATERIAL	JOB N°	NOTE
ROQUETTE End Users	Cereal	Cassano Spinola (AL) Italy	1999	1	Storage complete plant of wood flour	Tank Ø4200 L=16500	18000		220	Fe 360	1	Vertical
					Key hands	Coclea Ø400	800	50		Fe 360	1	15° Inclined
ROQUETTE End Users	Cereal	Cassano Spinola (AL) Italy	1998	1	Bucket conveyors for grouds precoat GDS	21" L=12500	4000	2		AISI 316	138	Horizontal
ROQUETTE End Users	Cereal	Cassano Spinola (AL) Italy	1998	1	Extraction & Handling of Glutine di Mais	9" L=18500	1500	10		Fe 360	88	Horizontal
				1	Extraction & Handling of Glutine di Mais	9" L=14000	1300	10		Fe 360	88	Inclinata
				1	Extraction & Handling of Glutine di Mais	Ø350 L=3500	750	15		AISI 304 L	88	Horizontal
				1	Extraction & Handling of Glutine di Mais	Ø450 L=3500	950	15		AISI 304 L	88	Horizontal
				2	Belt conveyors for Glutine di mais	l=500 L=10000	1600	17		AISI 304 L	98	Horizontal Inclined
			2000	6	Screw conveyor for sugar	Diam. 300 L=2200-6500	1450	22		AISI316L	101	Horizontal Inclined
			2006	1	Screw conveyor for sugar	Diam. 200 L=1800	500	10		AISI304L	162	Horizontal Inclined
			2008	2	Screw conveyor for maize starch	Diam. 350 L=4850/4150	1650	12		AISI316L	39	ATEX 22
				2	Pneumatic slide under screw conveyor	500*500	450	12		AISI316L	39	ATEX 22
				1	Horizontal mixer for dextrose-glucose	Diam. 600*4000	2600	1,2		AISI316L	58	Horizontal
				1	Horizontal mixer for dextrose-glucose	Diam.1000*3200	2100	0,8		AISI316L	58	Horizontal
TESSENDERLO End Users	Chemical	Pieve Vergonte Italy	1999	8	Shell & Tube Heat Exchangers	various	to 4000	1 to 120 Mq	various	Fe 510.2 kW + Sanicro 28	77	ISPESL
				8	Vessels	Ø from 500 to 2600	to 6000		various	Fe 510 2 kW	77	ISPESL
HEXION End Users	Chemical	Varese Italy	2006	1	Screw conveyor for phenolic resin plast	Diam. 250*4800	650	15		AISI304L	55	ATEX 22
				1	Screw conveyor for phenolic resin plast	Diam. 250*3650	550	15		AISI304L	55	ATEX 22



CUSTOMER	PLANT	SITE	YEAR	N°	TYPE	DIM. DATA	WEGHT	CONVEYORS	VESSEL	MATERIAL	JOB N°	NOTE
								Capacity	Capacity			
							Kg	M³/h				
LEGNO CHIMICA End Users	Wood	Rende (CN) Italy	1999	1	Chips storage plant , complite with conveyors system , tanks chy hands plant					C.S.		
LAMBERTI	Chemical	Albizzate (VA) Italy	1999	2	Reactors for high- viscosity products (monomeri)	Ø2500	7000		15	AISI 316 L	28	ISPESL
						Ø2000	5000		10			
				3	Reactors complite with half coils	Ø3400	12000		34	SAF 2205	51	ISPESL
				3		Ø3200	12000		32	AISI 316 L	51	ISPESL
				1		Ø3200	9000		32	AISI 316 L	51	ISPESL
				1		Ø2400	4500		15	AISI 316 L	51	ISPESL
				1	Reactors complite with half coils and internal coils in Hastelloy B2	Ø1600	3000		8	AISI 316 L	51	ISPESL
BALLESTRA Engineering	Detergent	Usa	1999	3	Converter Tower high temperature operating	Ø2300	18000		53	AISI 304 H	55	ASME "U" STAMP BEI
BALLESTRA Engineering	Detergent	England Procter & Gamble	1999	2	Sulphur Furnace	Ø1800	4000		5	A 516 Gr 60	2	BEI
				1	Air Dryer	Diam. 3400	16500		96	A 516 Gr 60	2	BEI
				2	Converter Tower high temperature operating	Ø2300	18000		53	AISI 304 H	2	BEI
BALLESTRA Engineering	Detergent		1995	1	Converter Tower	Ø1300	6500		32	AISI 304 H	97	Tested by Customer
MAURO SAVIOLA GORUP End Users	Wood panels	SIA Viadana MANTOVA	1995	20	Conveyors for wood panels						Fe360B	
			1996	16	Conveyors for wood panels						Fe360B	
			1997	21	Conveyors for wood panels						Fe360B	
			1998	38	Conveyors for wood panels	Complete plan for chips					Fe360B	
			2000	11	Conveyors for wood panels						Fe360B	
			2002	10	Conveyors for wood panels	Complete plan for chips					Fe360B	
			2003	10	Conveyors for wood panels						Fe360B	
	Wood panels	SILLA / SAMA Sustinente MANTOVA	1995	22	Conveyors for wood panels						Fe360B	
			1996	58	Conveyors for wood panels	Complete plan for chips					Fe360B	
			2003	10	Conveyors for wood panels						Fe360B	
			2004	2	Conveyors for wood panels						Fe360B	
			2005	2	Conveyors for wood panels						Fe360B	
			2007	15	Conveyors for wood panels	Complete plan for chips					Fe360B	
			2008	4	Conveyors for wood panels						Fe360B	



SAMEC
COSTRUZIONI MECCANICHE

S.A.M.E.C. S.p.A. - Costruzioni Meccaniche
Via IV Novembre, 1 - 26022 - Castelverde (CR) - ITALIA
R.L. di CREMONA - C.F. / P.IVA: 00110410198
R.E.A. 63782 - CAP. SOC. € 155.000,00 i.v.
Tel. +39 0372 42 71 22 - Fax. +39 0372 42 81 34
info@samecsa.com - www.samecsa.com



STAMP HOLDER

CUSTOMER	PLANT	SITE	YEAR	N°	TYPE	DIM. DATA	WEGHT Kg	CONVEYORS	VESSEL	MATERIAL	JOB N°	NOTE
								Capacity M³/h	Capacity			
MAURO SAVIOLA GORUP End Users	Wood panels	SIT Mortara PAVIA	1995	5	Conveyors for wood panels					Fe360B		
			1997	73	Conveyors for wood panels	Complete plan for chips			Fe360B			
			1998	50	Conveyors for wood panels	Complete plan for chips			Fe360B			
			1999	11	Conveyors for wood panels			Fe360B				
			2002	14	Conveyors for wood panels			Fe360B				
			2006	1	Conveyors for wood panels			Fe360B				
	Wood panels	NUOVA RIVART Radicofani SIENA	1999	8	Conveyors for wood panels				Fe360B			
			2001	3	Conveyors for wood panels				Fe360B			
			2002	3	Conveyors for wood panels				Fe360B			
			2004	3	Conveyors for wood panels				Fe360B			
	Chemicals	SADEPAN CHIMICA Viadana MANTOVA	1999	13	Conveyors for wood panels				Fe360B		Urea	
			2002	22	Conveyors for wood panels				Fe360B		Urea	
2004			6	Conveyors for wood panels				Fe360B		Urea		
FARCHEMIA Users End	Chemical	Treviglio Bergamo Italy	1999	1	Screw conveyor for pharmaceutical	Diam. 300*5000	/	5		AISI 316 L	86	
			2000	1	Screw conveyor for pharmaceutical	Diam. 200	/	5		AISI 316 L	73	
				1	Screw conveyor for pharmaceutical	Diam. 125	/	2		AISI 316 L	73	
			2004	1	Screw conveyor for pharmaceutical	Diam. 250*3100	/	2		AISI 316 L	167	ATEX 22
			2006	1	Helical for Screw conveyor in Hardox steel	Diam. 450*4220	480	/		HARDOX400	21	
				1	Helical for Screw conveyor in Hardox steel	Diam. 450*4220	480	/		HARDOX400	187	
EUROTECNICA Engineering	Carbon Black Handling	Milano Italy	2004	1	Bucket elevator for carbon black	Diam. 400*210 H=33000	10500	30		AISI 316 L	163	ATEX 20/22
				1	Screw conveyor for carbon black	Diam. 500*30000	5870	5		AISI 316 L	163	ATEX 20/22
				1	Screw conveyor for carbon black	Diam. 550*23200	4430	2		AISI 316 L	163	ATEX 20/22
				1	Screw conveyor for carbon black	Diam. 550*23000	4400	2		AISI 316 L	163	ATEX 20/22
				1	Screw conveyor for carbon black	Diam. 600*10100	2245	/		AISI 316 L	163	ATEX 20/22
				1	Screw conveyor for carbon black	Diam. 600*10100	2245	/		AISI 316 L	163	ATEX 20/22
GAVAZZI Boiler Engineering	Energy Power	Italy	2002	1	Double chain conveyor for wet ash	TCC32" L=12000	18000	1		Fe360B + Hardox	18	



S.A.M.E.C. S.p.A. - Costruzioni Meccaniche
 Via IV Novembre, 1 - 26022 - Castelveverde (CR) - ITALIA
 R.L. di CREMONA - C.F. / P.IVA: 00110410198
 R.E.A. 63782 - CAP. SOC. € 155.000,00 i.v.
 Tel. +39 0372 42 71 22 - Fax. +39 0372 42 81 34
 info@samecsa.com - www.samecsa.com



CUSTOMER	PLANT	SITE	YEAR	N°	TYPE	DIM. DATA	WEGHT Kg	CONVEYORS	VESSEL	MATERIAL	JOB N°	NOTE
								Capacity M³/h	Capacity			
SAIB End Users	Wood panels	Caorso Italy	1996	1	Double Injector screw conveyor	Diam. 450*6500	7200	400		Fe360B	32	
				1	Wsching machine for wood chips	TCC800 L=11000	3450	25		Fe360B	/	
			1997	1	Discalper 13 shafts	13S-L1000	4200	150		Fe360B	57	
			1998	1	Screw conveyor 10 shafts screw	Diam. 500*8500	24000	600		Fe360B	98	
				1	Double Screw conveyor for wood chips	Diam. 700*8500	9750	400		Fe360B	59	
			2002	1	Belt conveyor	TN500 L=22000	4200	50		Fe360B	95	
			2007	1	Double chain conveyor separator	TCC1000 L=14000	6500	10		Fe360B + Hardox	92	
2008	1	Double chain conveyor separator	TCC1000 L=18000	7800	12		Fe360B + Hardox	48				
TERMOKIMIK Engineering	Energy Power	Milano Italy	2003	4	Belt conveyor	TN1000 L=12000/26000	/	400		Fe360B	110/A	
				6	Belt conveyor	TN1200 L=22000/45000	/	400		Fe360B	110/A	
				4	Belt conveyor	TN1400 L=52000	/	400		Fe360B	110/A	
			2004	4	Belt conveyor	TN1000 L=12000/26000	/	400		Fe360B	110/B	
				6	Belt conveyor	TN1200 L=22000/45000	/	400		Fe360B	110/B	
				4	Belt conveyor	TN1400 L=52000	/	400		Fe360B	110/B	
			2005	1	Belt conveyor	TN500 L=22000	4200	50		Fe360B	95	
			2007	5	Belt conveyor	TN1000	/	22		Fe360B	26	
			2008	2	Screw conveyor	Diam. 350*8500	4200	15		Fe360B	59	
				2	Diverter	2100*800 H=2200	2000	15		Fe360B	59	
1	Belt conveyor	TN650 L=60000		22500	15		Fe360B	59				
BIOMASSE ITALIA Engineering	Energy Power	ROMA Italy	2000	1	Double Screw conveyor for wood chips	Diam. 600*8000	11000	600		Fe360B	126	
				1	Belt conveyor	TN1400 L=40000	8500	600		Fe360B	126	
				1	Chain conveyor	TC35* L=35000	12000	600		Fe360B	126	
			2001	1	Discalper 10 shafts	10S-L1000	4200	150		Fe360B	37	
				1	Screw conveyor for wood chips	Diam. 600*6500	7500	600		Fe360B	37	
				1	Belt conveyor	TN1400 L=40000	8500	600		Fe360B	37	
				1	Push floor system	4grids 4500*22000	/	100		Fe360B	37	
				1	Belt conveyor	TN800 L=8500	2200	150		Fe360B	37	
			2008	3	Electric motor slide	1500*1500	1600	600		Fe360B	32	
				1	Chain conveyor	TCC1500 * 29000	30000	600		Fe360B	32	
				1	Chain conveyor	TCC1500 *47000	50000	600		Fe360B	32	



S.A.M.E.C. S.p.A. - Costruzioni Meccaniche
 Via IV Novembre, 1 - 26022 - Castelferde (CR) - ITALIA
 R.L. di CREMONA - C.F. / P.IVA: 00110410198
 R.E.A. 63782 - CAP. SOC. € 155.000,00 i.v.
 Tel. +39 0372 42 71 22 - Fax. +39 0372 42 81 34
 info@samecsa.com - www.samecsa.com



CUSTOMER	PLANT	SITE	YEAR	N°	TYPE	DIM. DATA	WEGHT Kg	CONVEYORS	VESSEL	MATERIAL	JOB N°	NOTE
								Capacity M³/h	Capacity			
STF Engineering	Energy Power	MILANO Italy	2004	1	Discalper 13 shafts	13S-L1200	5500	200		Fe360B	82	
				1	Belt conveyor	TN1000 L=14500		200		Fe360B	82	
				1	Push floor system	4grids 4500*20500		200		Fe360B	82	
				1	Push floor system	4grids 4500*20500		200		Fe360B	82	
				1	Belt conveyor	TN1000 L=66000		200		Fe360B	91	
				1	Belt conveyor	TN1000 L=108000		200		Fe360B	91	
				1	Belt conveyor	TN1000 L=60000		200		Fe360B	91	
KABLITZ Engineering	Energy Power	Germany	2000	1	Wet ash double chain conveyor	TCC1000 * 10000	/	2		Fe360B + HARDOX	31	
				1	Wet ash double chain conveyor	TCC850 * 14500	/	2		Fe360B + HARDOX	100	
				1	Chain conveyor	TC13"	/	5		Fe360B	100	
				1	Distributor flap conveyor	2500*1200 H=2200	1650	100		Fe360B	100	
			2005	1	Cooling Screw conveyor	Diam. 300*5500	2250	15		AISI310	195	
				1	Cooling Screw conveyor	Diam. 250*4000	2000	10		AISI304	65	
				1	Distributor flap conveyor	2500*1200 H=2200	1650	100		Fe360B	65	
				1	Wet ash double chain conveyor	TCC800 * 12000	4500	2		Fe360B + HARDOX	65	
				1	Chain conveyor	TC11" L=14500	2560	10		Fe360B	87	
				1	Wet ash double chain conveyor	TCC1000 * 18000	5700	3		Fe360B + HARDOX	87	
				1	Casisson 6 shafts screw	Diam. 600 * 6000	14500	80		Fe360B	87	
				1	Cooling Screw conveyor	Diam. 300*5500	2250	15		AISI310	87	
			2006	2	Wet ash double chain conveyor	TCC1000 * 25500	/	3		Fe360B + HARDOX	113	
				1	Double chain conveyor for Biomass fuel	TCC1600 * 14000	/	100		Fe360B + HARDOX	113	
				2	Chain conveyors for ash	TC11"/13"	2560	5		Fe360B	113	
				1	Push floor system	6grids 6800*4600	/	100		Fe360B	113	
				1	Cooling Screw conveyor	Diam. 250*7000	150°C	1		Fe360B	113	
				1	Cooling Screw conveyor	Diam. 200*4050	150°C	1		Fe360B	113	
				1	Screw conveyor	Diam. 200*1500	1000°C	1		AISI310	113	
				1	Cooling Screw conveyor	Diam. 250*7810	600°C	1		AISI310	113	
1	Electric motor slide	1500*1400		1200	100		Fe360B	113				
1	Wet ash double chain conveyor	TCC1000 * 27000		/	3		Fe360B + HARDOX	185				
1	Screw conveyor	Diam. 200*2200		500°C	1		AISI310	185				
1	Wet ash double chain conveyor	TCC850 * 18000		/	2		Fe360B + HARDOX	221				



SAMEC
COSTRUZIONI MECCANICHE

S.A.M.E.C. S.p.A. - Costruzioni Meccaniche
Via IV Novembre, 1 - 26022 - Castelverde (CR) - ITALIA
R.L. di CREMONA - C.F. / P.IVA: 00110410198
R.E.A. 63782 - CAP. SOC. € 155.000,00 i.v.
Tel. +39 0372 42 71 22 - Fax. +39 0372 42 81 34
info@samecspa.com - www.samecspa.com



CUSTOMER	PLANT	SITE	YEAR	N°	TYPE	DIM. DATA	WEGHT	CONVEYORS	VESSEL	MATERIAL	JOB N°	NOTE
								Capacity	Capacity			
							Kg	M³/h				
KABLITZ Engineering	Energy Power	Germany	2006	1	Chain conveyors for fuel Biomass	TC19"	/	80		Fe360B	221	
				1	Push floor system	3grids 4500*10000	/	80		Fe360B	221	
			2007	1	Wet ash double chain conveyor	TCC850 * 14000	/	2		Fe360B + HARDOX	23	
				1	Wet ash double chain conveyor	TCC850 * 10000	/	2		Fe360B + HARDOX	23	
				1	Screw conveyor	Diam. 250*3640	150°C	5		Fe360B	23	
			1	Belt conveyor	TN1000 L=60000	/	5		Fe360B	23		
			2008	1	Wet ash double chain conveyor	TCC1000 * 28000	/	3		Fe360B + HARDOX	68	
				1	Casisson 4 shafts screw	Diam. 800 * 4100	/	85		Fe360B + HARDOX	68	
				1	Double Chain conveyors for fuel Biomass	TC1200*54000	/	100		Fe360B	68	
				1	Discalper 5 shafts	5S-L1400	7000	100		Fe360B + HARDOX	68	
				1	Belt conveyor	TN1000 L=800	/	15		Fe360B	68	
				1	Belt conveyor	TN1200 L=11000	/	100		Fe360B	68	
				1	Double Screw conveyor for wood	Diam. 800 * 8500	/	100		Fe360B + HARDOX	68	
				1	Screw conveyor	Diam. 300*3500	800°C	5		AISI310	207	
			1	Screw conveyor	Diam. 250*4200	200°C	5		AISI304	207		

PLATE CONVEYOR



SCREW CONVEYOR



COOLING SCREW CONVEYOR



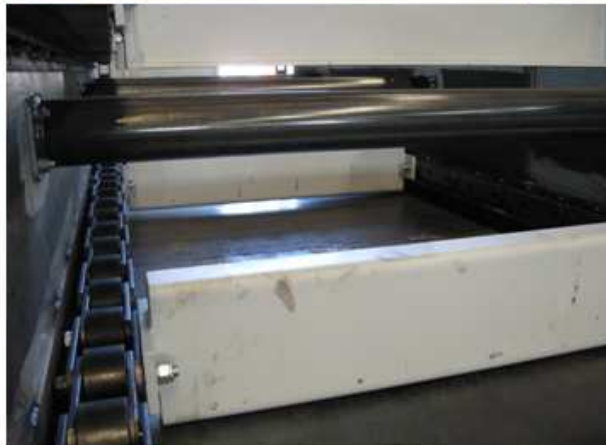


CHAIN CONVEYOR





DOUBLE CHAIN CONVEYOR FOR WOOD CHIPS





WET ASH DOUBLE CHAIN CONVEYOR UNDER THE BOILER





CLEANING AND SEPARATOR CONVEYOR





BELT CONVEYOR





DISCALPER





PUSH FLOOR SYSTEM









SAMEC
COSTRUZIONI MECCANICHE

S.A.M.E.C. S.p.A. - Costruzioni Meccaniche

Via IV Novembre, 1 - 26022 - Castelveverde (CR) - ITALIA

R.L. di CREMONA - C.F. / P.IVA: 00110410198

R.E.A. 63782 - CAP. SOC. € 155.000,00 i.v.

Tel. +39 0372 42 71 22 - Fax. +39 0372 42 81 34

info@samecspa.com - www.samecspa.com



STAMP HOLDER

NOTE AND CONSIDERATIONS