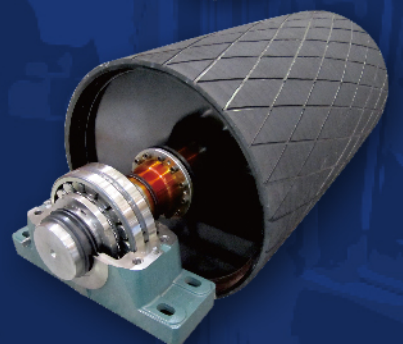
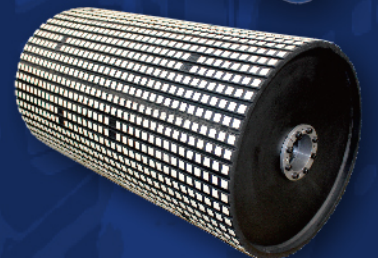
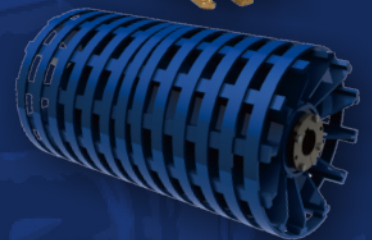


# Martin

## CONVEYOR PULLEYS

- DRUM PULLEY
- WING PULLEY
- LAGGING/CERAMIC LAGGING
- BUSHING/KEYLESS LOCKER
- SHAFT/BEARING





■ *Martin* focus on the Power Transmission, Bulk Material Handling and tool industry has evolved and matured over the 60 plus years of service throughout the industry. During this time *Martin* has amassed one of the largest globally offered product lines which are all serviced by the *Martin* worldwide family of manufacturing facilities.



■ *Martin* completed the manufacturing expansion project of our Changzhou facility in December 2016, which now allows us to incorporate the full range of conveyor pulleys from standard to engineered class design.



# Conveyor Pulleys

*Martin*

- Whether your requirement is moving light or extreme bulk material, *Martin* can supply a vast array of reliable conveyor pulleys to fit all your application needs.
- *Martin* can provide a full range of high quality hot vulcanized and replaceable lagging options.
- Our hot vulcanization process is 100% produced in-house to maintain a quality level that far exceeds the industry standard.
- *Martin* engineering departments can help ascertain the correct design and duty for your requirements to improve pulley performance and extend belt life.
- *Martin*'s full range of manufactured product offering includes shafts, bushings, keyless locking devices, and Gear and Grid Couplings. We Can provide a fully drop-in ready assembled conveyor pulley unit!



Coal



Grain



Phosphate





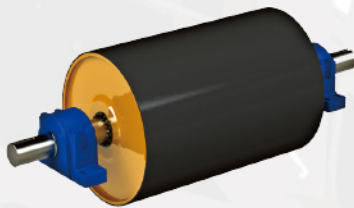
Standard Duty  
Drum Pulley



Quarry Duty  
Drum Pulley



Mine Duty  
Drum Pulley



Engineered Class  
Drum Pulley



Machined  
Drum Pulley

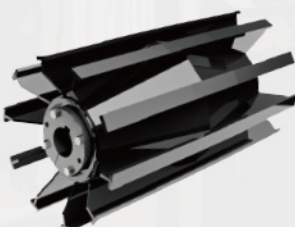


Clean Flight®  
Wing Pulley

Face	C	S	D	120	26	X25	L	3	H	B	Bushing
	C Crown	S Flat									No B, no bushing
Pulley Type											Lagging Style
											If no letter, Lagging is Smooth
											H Herringbone
											D Diamond Groove
											C Ceramic
											(no thickness specified)
											S Slide Lagging
											R Radial/Circumferential
											P Parallel (with shaft)
Pulley Style											Lagging Thickness
											2 1/4" 4 1/2" 6 3/4"
											3 3/8" 5 5/8"
Diameter											Lagging
Example:											No suffix, no lagging
120 12.0"											Bushing Part Number
065 6.5"											Conveyor pulleys use "short" bushings
Face Width											XT MXT-STL (Steel)
Inches											X or MXT (Cast)
											SF, E, F, JS.... QD Bushing
											K TB Bushing
											H M-HE

### Part Nomenclature

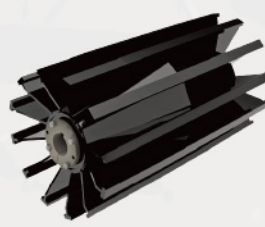
Standard Duty  
Wing Pulley



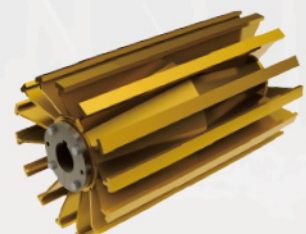
Quarry Duty  
Wing Pulley



Mine Duty  
Wing Pulley



Quarry Duty AR  
Wing Pulley





# Conveyor Pulleys Lagging

*Martin*

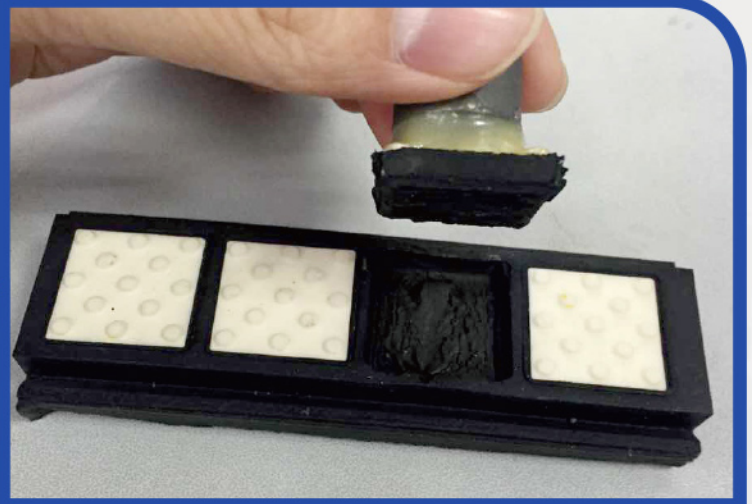
## *Martin* Rubber lagging

*Martin* offers high quality, durable abrasion resistant rubber, ceramic replaceable lagging. With our unique rubber to metal substrate bonding process we are able to achieve extremely high and consistent adhesion strength. This will guarantee the long term stability of your overall conveyor system.

DESCRIPTION	PARAMETER
Hardness (shore A)	65+/-5
Elongation	400%
Abrasion resistance (DIN 53516)	< 90mm <sup>3</sup>
Peel Strength	20kN/m



- *Martin* helps to guarantee our lagging quality and procedures with documented testing performed on every pulley to record the rubber tear force and to test for a 100% rubber tear bond.

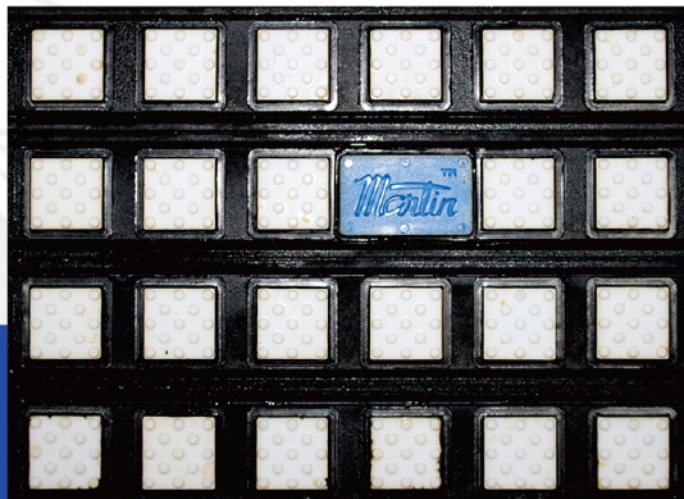




### Martin Ceramic lagging

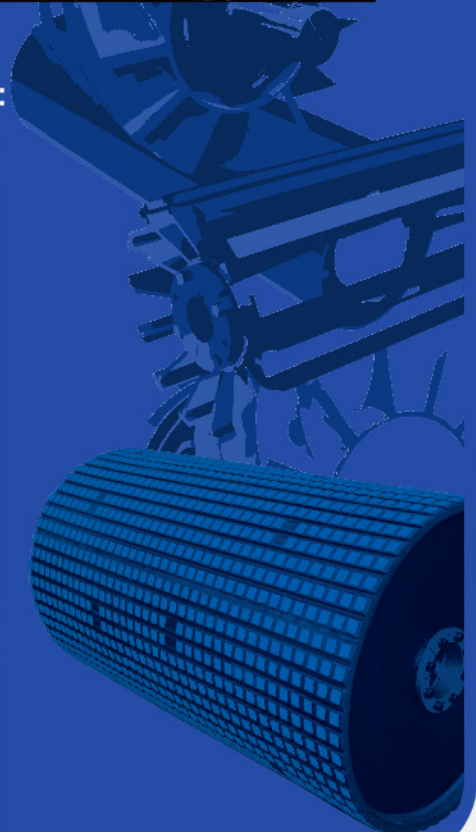
- *Martin* ceramic lagging has a documented high friction coefficient and high abrasion resistance. *Martin* ceramic tiles have a high content of  $Al_2O_3$  to guarantee the hardness and impact resistance. These properties are checked during each production batch of tiles to ensure consistent quality and performance.

DESCRIPTION	PARAMETER
$Al_2O_3$	>96%
Density	> 3.7g/cm3
Vickers Hardness	1200-1300
Impact resistance	4.1 Mpa.m 1/2



- Compared with traditional bonded ceramic lagging, *Martin* hot vulcanized ceramic lagging has the following obvious advantages:

- Adhesion strength is much stronger with a documented 100% rubber tear bond for superior operation and longevity.
- Superior ceramic tile bonding process that produces a documented 100% rubber tear bond. Applying this system during the production of the ceramic lagging will guarantee a zero loss of tiles under extreme loads and over extend periods of operation.
- All longitudinal lagging seams are sealed with raw rubber prior to the vulcanization process to create a seamless joint to eliminate hydraulics pumping moisture and material into the seams during operation.
- Edge lifting has also been addressed with the implementation of sealing this joint during the vulcanization process.



## ■ Clean Flight<sup>®</sup> Wing Pulley

*Martin* innovative patent construction incorporated material ejection technology derived from screw conveyor technology.

CFW pulleys can clean the inside surface of the belt during operation to prevent material build-up and belt slippage between drive pulley and belt. This in turn extends the life of the belt and all pulley contact surfaces.



## ■ Compared with the standard wing pulley, CFW pulley has the following obvious advantages:

- The patented spiral on the wings creates rotational forces for improved material ejection and superior cleaning ability.
- The surface of the CFW is designed to maintain continuous contact with the belt which significantly reduces the ambient noise levels and dramatically reduces vibration over traditional wing pulley designs. This effect reduces shock levels on the belt which will in turn extend the life of the belt and overall conveyor system.
- Enhanced belt tracking and strength is achieved as each pulley wing contacts the belt at a helix angle for improved performance and reliability.





## The *Martin* Advantage

- *Martin* has over 65 years experience servicing customers around the globe. *Martin* has the engineering and overall technical experience to help ensure the design and quality of our products exceeds industry standards.
- *Martin* manufacturing processes meet international standards as required by our growing worldwide customer base.
- State of the art welding equipment and processes are a standard practice.
- Unique pipe-end design on standard wing pulleys to prevent wing folding and weld fatigue.
- Clean Flight® wing pulleys provide a stable platform for improved cleaning and extended belt life.
- Lagging products and bonding processes at the cutting edge of technology for longer life cycles.
- *Martin* comprehensive line of reliable and durable conveyor pulleys will support all of your bulk material handling requirements.

When downtime is not an option, *Martin* is the ONE to rely on.



*Martin* Sales and Engineering will work with you to completely solve your belt conveying needs. Since there are infinite amounts of conveying possibilities and configurations our sales and engineering staff are prepared to assist you with a custom solution.

### CHINA

Shanghai • Changzhou • Fuzhou • Tianjin  
Tel: +86 21 67084888  
Fax: +86 21 67084889  
IntlSales@martinsprocket.com  
DG\_BR82\_Sales@martinchina.com

### USA

**Corporate Offices Sales & Manufacturing:**  
Arlington, TX

**Regional Manufacturing Plants:**  
Albemarle, NC • Atlanta, GA • Burleson, TX • Danielsville, PA • Ft. Worth, TX • Montpelier, OH • Sacramento, CA

**Manufacturing Only:**  
Abilene, TX • Clarksville, TX • Dallas, TX Mansfield, TX • Paragould, AR

**Branch Manufacturing Plants:**  
Boston, MA • Charlotte, NC • Chicago, IL • Denver, CO • Houston, TX • Kansas City, MO • Los Angeles, CA • Minneapolis, MN • Nashville, TN • Pittsburgh, PA • Portland, OR • Tampa, FL

### CANADA

Cambridge, Ontario  
Edmonton, Alberta  
Mississauga, Ontario

### MEXICO

Guadalajara, JAL  
Monterrey, N.L.  
Toluca, MEX

### BRAZIL

São Paulo, SP

### UNITED KINGDOM

North Hampton

Distributor authorized by *Martin*

**www.martinsprocket.com**

Call *Martin*, we will be happy to assist you!  
www.martinsprocket.com +86 0519 86226788