

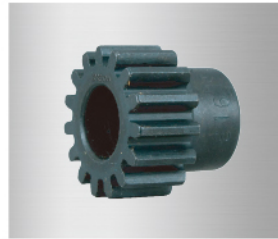
Martin Products at Work in the Cement Industry



Roller Chain Sprockets



Engineering Class
Sprockets



Gears



MTO Gears



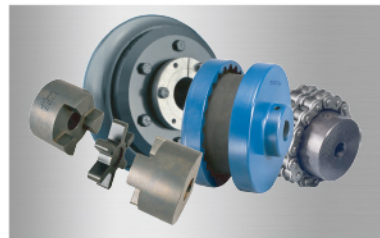
Bushings



Sheaves



MTO Sheaves



Couplings



Bucket Elevators



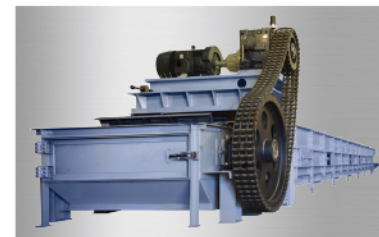
Clean Flight™ Wing
Pulley



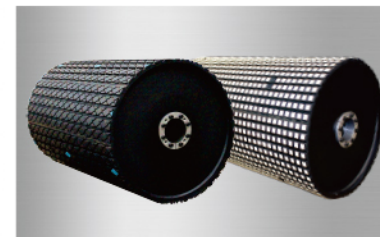
Screw Conveyors



Shaftless Screw Conveyors



Drag Conveyor



Conveyor Pulleys



CHINA

Shanghai • Changzhou • Fuzhou •
Tianjin

Tel: +86 21 67084888

Fax: +86 21 67084889

IntlSales@martinsprocket.com

DG_BR82_Sales@martinsprocket.com

USA

Corporate Offices Sales & Manufacturing: Arlington, TX

Regional Manufacturing Plants: Albemarle, NC • Atlanta, GA

• Burleson, TX • Danielsville, PA • Ft. Worth, TX • Montpelier,
OH • Sacramento, CA

Manufacturing Only:

Abilene, TX • Clarksville, TX • Dallas, TX Mansfield, TX •
Paragould, AR

Branch Manufacturing Plants: Boston, MA • Charlotte, NC •

Chicago, IL • Denver, CO • Houston, TX • Kansas City, MO •

Los Angeles, CA • Minneapolis, MN • Nashville, TN •

Pittsburgh, PA • Portland, OR • Tampa, FL

CANADA

Cambridge, Ontario
Edmonton, Alberta
Mississauga, Ontario

MEXICO

Guadalajara, JAL
Monterrey, N.L.
Toluca, MEX

BRAZIL

São Paulo, SP

UNITED KINGDOM

North Hampton

www.martinsprocket.com

Distributor authorized by *Martin*

Martin

CEMENT

CAPABILITIES

Applications:

Conveying

Screw Feeders

Silos

Stock Piles

Hoppers

Kilns / Dryers

Scale Belts

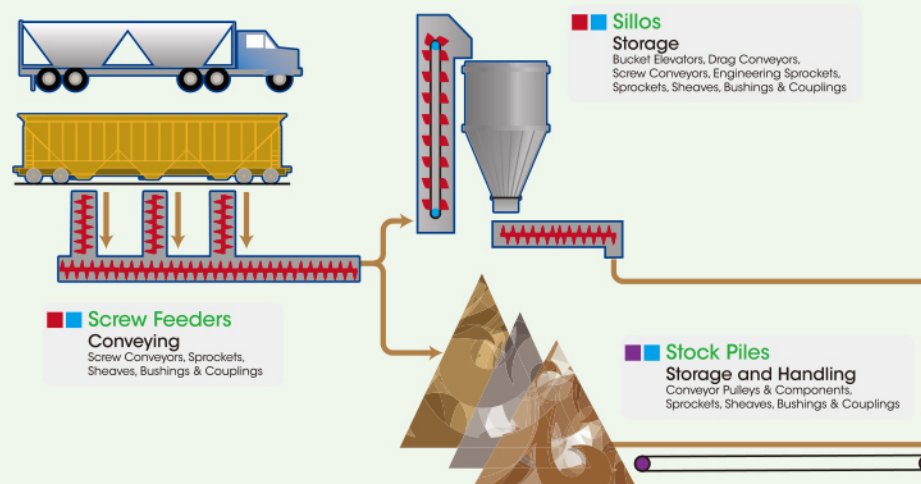
Vibrating Hoppers

Bagging Systems

WWW.MARTINSPROCKET.COM

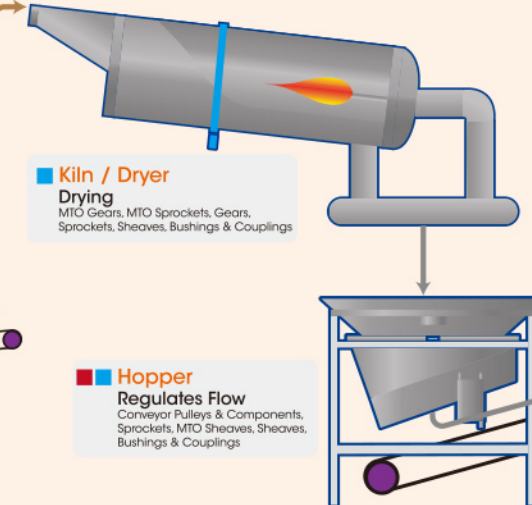
Cement Production Diagram

1. RAW MATERIAL STAGING & STORAGE



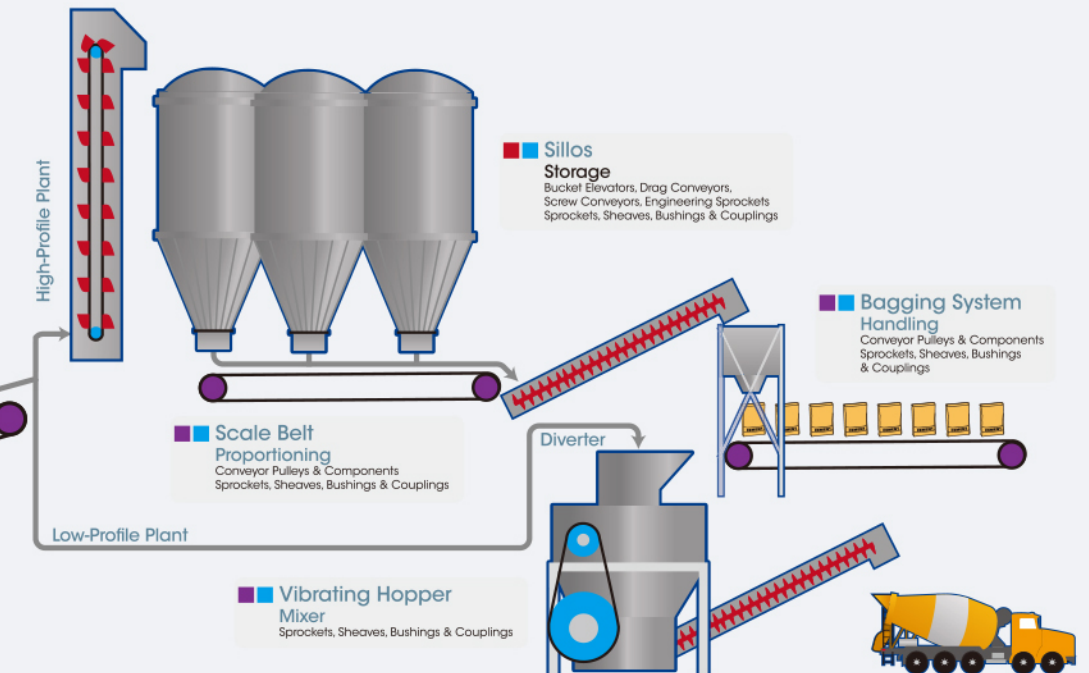
Concrete batch plants come in a variety of styles and configurations designed to accommodate multiple markets with various technical and environmental considerations. This diagram offers a general overview and is designed to help you identify specific areas where *Martin* products are used.

2. DRYING



Drying takes place in a rotary kiln or sand dryer. (This step may be omitted in some plants or in some seasons).

3. MIXING & STORAGE



Aggregates (sand, gravel, or crushed stone), admixtures, fibers, and water (for wet process) are properly proportioned and mixed together. Silos are found in the High-Profile plant. Raw material is dropped on a weigh conveyor for proper proportioning then delivered by conveyor to a loading truck. Low-Profile plants separate materials via a diverter and are processed in a shaker hopper or mixer.

KEY NOTES:

MATERIAL HANDLING SYSTEMS:

Typical Conveyor Pulley Conveyor

All arrows in any color represent product conveyed by a:
Belt Conveyor, Screw Conveyor, Drag Conveyor and/or Bucket Elevator

TYPE OF PRODUCTS USED IN PROCESS:

- Power Transmission Components
- Conveyor Pulleys & Components
- Material Handling Conveyor & Components

Martin

Conveying

Mining plants mostly use Belt Conveyors because of their ability to handle bulk product and transport long distances; they also use Screw Conveyors, Drag Conveyors and Bucket Elevators depending on the plant's needs and layout.

Martin products used: Conveyor Pulleys, Conveyor Pulley Components, Screw Conveyors, Drag Conveyors, Bucket Elevators, Engineering Class Sprockets, Sprockets, Sheaves, Bushings & Couplings.

Screw Feeders

Materials are brought in by truck or rail and the material is unloaded and transported by Screw Feeders.

Martin products used:

Screw Conveyors, Sprockets, Sheaves, Bushings & Couplings

Silos

The material is stored in silos, which are loaded from the top, typically requiring Bucket Elevators or Drag Conveyors.

Martin products used:

Bucket Elevators, Drag Conveyors, Screw Conveyors, Engineering Sprockets, Sprockets, Sheaves, Bushings & Couplings

Stock Piles

In some plants the material is stored in Stock Piles. These piles are typically loaded and unloaded by Belt Conveyor.

Martin products used:

Conveyor Pulleys & Components, Sprockets, Sheaves, Bushings & Couplings

Hopper

Raw materials enter the loading hopper and through a Screw Feeder are loaded onto the conveyor leading to the Kiln.

Martin products used:

Screw Conveyors, Sprockets, MTO Sheaves, Sheaves, Bushings & Couplings

Kiln / Dryer

Here the product is dried, the kiln has a large MTO gear or a MTO Sprocket, and drive that allow the rotation of the cylinder body of the kiln. The dried and hot products are later cooled in cylinders.

Martin products used:

MTO Gears, MTO Sprockets, Gears, Sprockets, Sheaves, Bushings & Couplings

Hopper

Raw materials enter the loading hopper, which loads, to a Belt Conveyor. From here, the product, depending on the plant, will go to a silo (High-Profile Plant) or the mixing hopper (Low-Profile Plant).

Martin products used:

Conveyor Pulleys & Components, Sprockets, Sheaves, Bushings & Couplings

Silos

The material is stored in silos, which is loaded from the top, typically requiring Bucket Elevators or Drag Conveyors.

Martin products used:

Bucket Elevators, Drag Conveyors, Screw Conveyors, Engineering Sprockets, Sprockets, Sheaves, Bushings & Couplings

Scale Belt

Special Belt Conveyors with a scaling system proportion the materials.

Martin products used:

MTO Conveyor Pulleys, Conveyor Pulleys & Components, Sprockets, Sheaves, Bushings & Couplings

Vibrating Hopper

Here the material is mixed before the product is sent to a truck.

Martin products used:

Screw Conveyors, Sprockets, MTO Sheaves, Sheaves, Bushings & Couplings

Bagging Belt System

Special Belt Conveyor system where the bags are filled with material and transported to their storage or shipping.

Martin products used:

MTO Conveyor Pulleys, Conveyor Pulleys & Components, Sprockets, Sheaves, Bushings & Couplings